

NOTES:

- Pre-focus instruments where possible.
- Drop color prior to focus.
- Sola Spots should be in extended mode.
- Orient all moving heads the same.
- Keep traffic areas free of loose cable.
- Provide spare 6" cuts of R119 and R132.
- Please contact designer with all questions.

	ETC Source4 26deg
	ETC Source4 36deg
	Altman 3in Fresnel
	Altman PAR 64 WFL
	Color Scroller
	Color Kinetics Colorblaze 72
	Altman 520 Strip Cell
	Color Kinetics Colorblast 12
	High End Systems Sola Spot LED
	Elation ZW37
	Color Channel
	Unit Number
	Channel

THIS DRAWING CONTAINS ONLY VISUAL CONCEPTS AND CONSTRUCTION SUGGESTIONS.

The lighting designer is solely responsible for the appearance of the production, not its safety. The designer will promptly correct any specification found to be incompatible by the Producer with proper safety precautions. The Producer will indemnify, defend, save, and hold the designer (and his or her family or heirs) harmless from and against all liability, costs, or fees, whatsoever which they may suffer by reason of the design furnished hereunder. Finally, the producer agrees to carry comprehensive general liability insurance applicable to any claims that might arise due to any work performed under this Agreement. This drawing is prepared for electricians to understand the placement of lighting fixtures only and should not be used to locate or install scenery.

Lighting Design by
Jeremy Jason
 520.419.9657
 Me@JJasonDesign.com

Arts Bank Mainstage University of the Arts	601 South Broad Street Philadelphia, PA 19107
Production Electrician Troy Martin O'shia (215) 485-8127 tmartinoshia@uarts.edu	Asst. Lighting Designer Abby Schlackman 631.708.7865 ASchlackman@uarts.edu
Direction: Becky Wright & Anisa George	
Sound Design: Brad Pouliot	
Scenic Design: Dalton Whiting	
Technical Direction: Matt Groeneveld	

PLATE 1 of 5 VERSION 1

POLYPHONE
 2 VENUES ~ 5 SHOWS ~ 7 DAYS

Running March 28th through April 1st

GRID PLOT

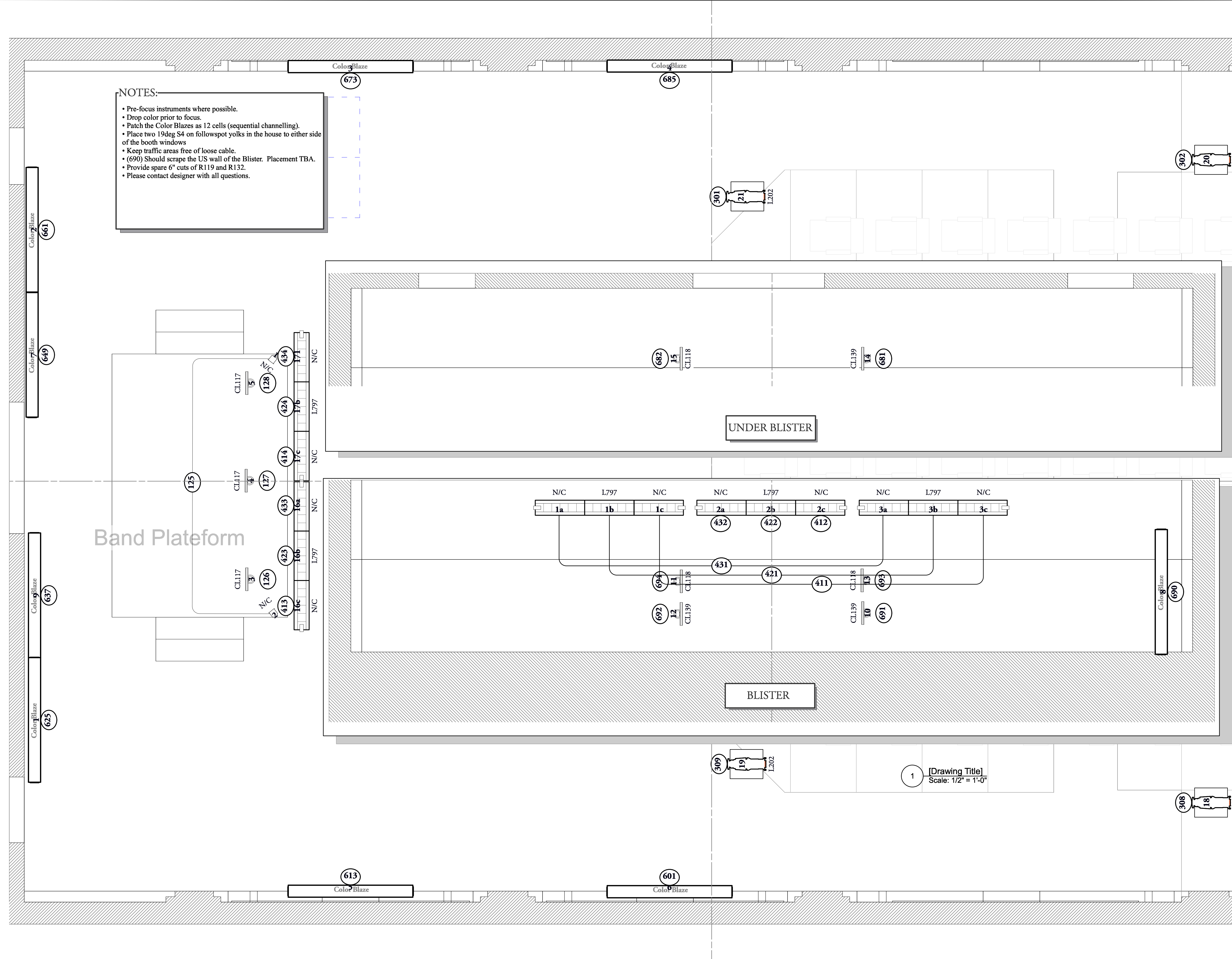
Date: 2/24/17 Drawn: VW2015 SE by JJ Scale: 1/2" = 1'-0"

NOTES:

- Pre-focus instruments where possible.
- Drop color prior to focus.
- Patch the Color Blazes as 12 cells (sequential channelling).
- Place two 19deg S4 on followspot yolks in the house to either side of the booth windows
- Keep traffic areas free of loose cable.
- (690) Should scrape the US wall of the Blister. Placement TBA.
- Provide spare 6" cuts of R119 and R132.
- Please contact designer with all questions.

- ETC Source4 26deg
- ETC Source4 36deg
- Altman 3in Fresnel
- Altman PAR 64 WFL
- Color Scroller
- Color Blaze
Color Kinetics Colorblaze 72
- Altman 520 Strip Cell
- Color Kinetics Colorblast 12
- High End Systems Sola Spot LED
- Elation ZW37

Color
Unit Number
Channel



THIS DRAWING CONTAINS ONLY VISUAL CONCEPTS AND CONSTRUCTION SUGGESTIONS.

The lighting designer is solely responsible for the appearance of the production, not its safety. The designer will promptly correct any specification found to be incompatible by the Producer with proper safety precautions. The Producer will indemnify, defend, save, and hold the designer (and his or her family or heirs) harmless from and against all liability, costs, or fees, whatsoever which they may suffer by reason of the design furnished hereunder. Finally, the producer agrees to carry comprehensive general liability insurance applicable to any claims that might arise due to any work performed under this Agreement. This drawing is prepared for electricians to understand the placement of lighting fixtures only and should not be used to locate or install scenery.

Lighting Design by
Jeremy Jason
520.419.9657
Me@JJJasonDesign.com

Arts Bank Mainstage University of the Arts	601 South Broad Street Philadelphia, PA 19107
Production Electrician Troy Martin O'shia (215) 485-8127 tmartinoshia@uarts.edu	Asst. Lighting Designer Abby Schlackman (631) 708-7865 ASchlackman@uarts.edu
Direction: Becky Wright & Anisa George Sound Design: Brad Pouliot Scenic Design: Dalton Whiting Technical Direction: Matt Groeneveld	

1 [Drawing Title]
Scale: 1/2" = 1'-0"

PLATE 2 of 5

POLYPHONE
2 VENUES ~ 5 SHOWS ~ 7 DAYS

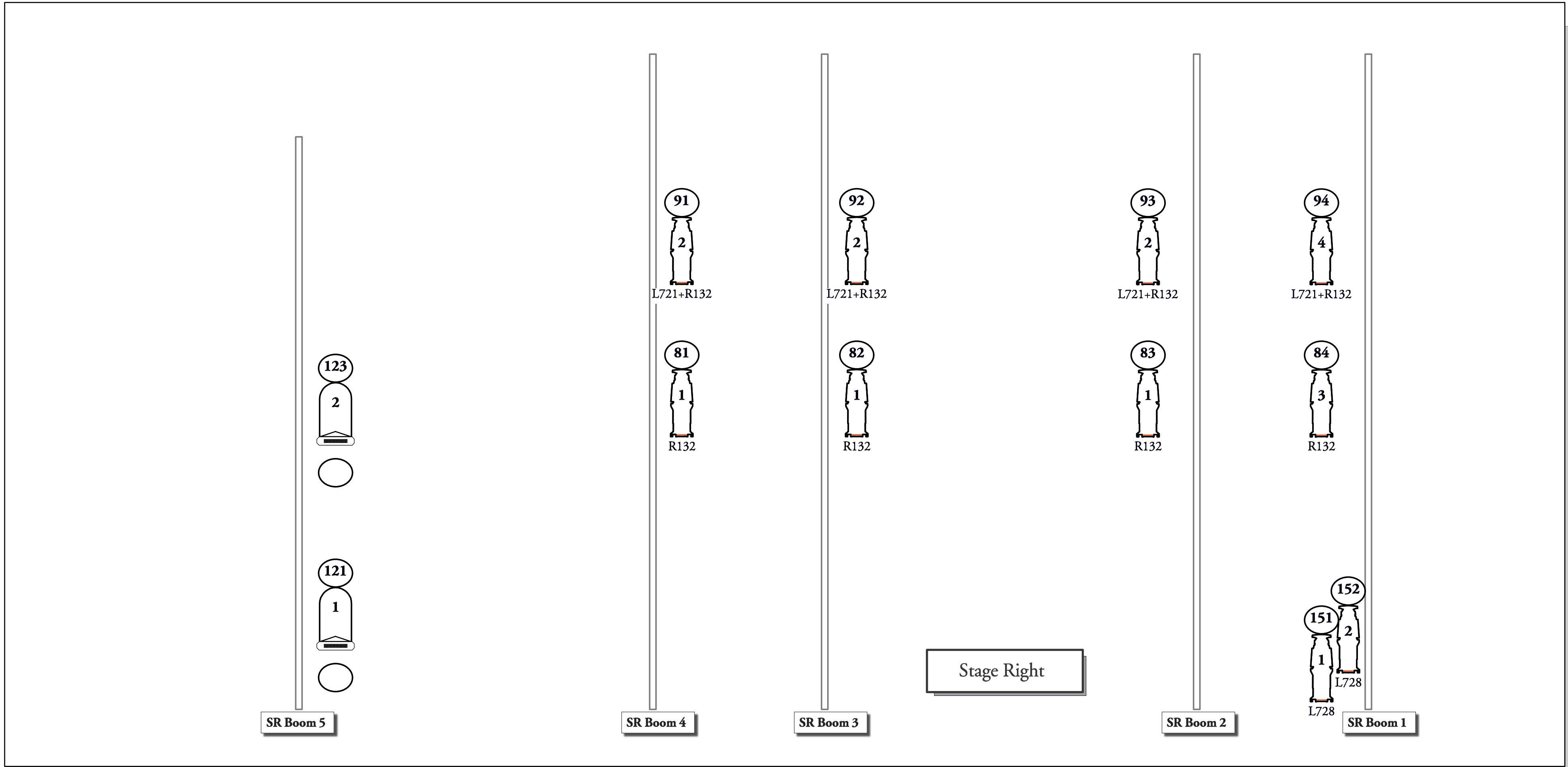
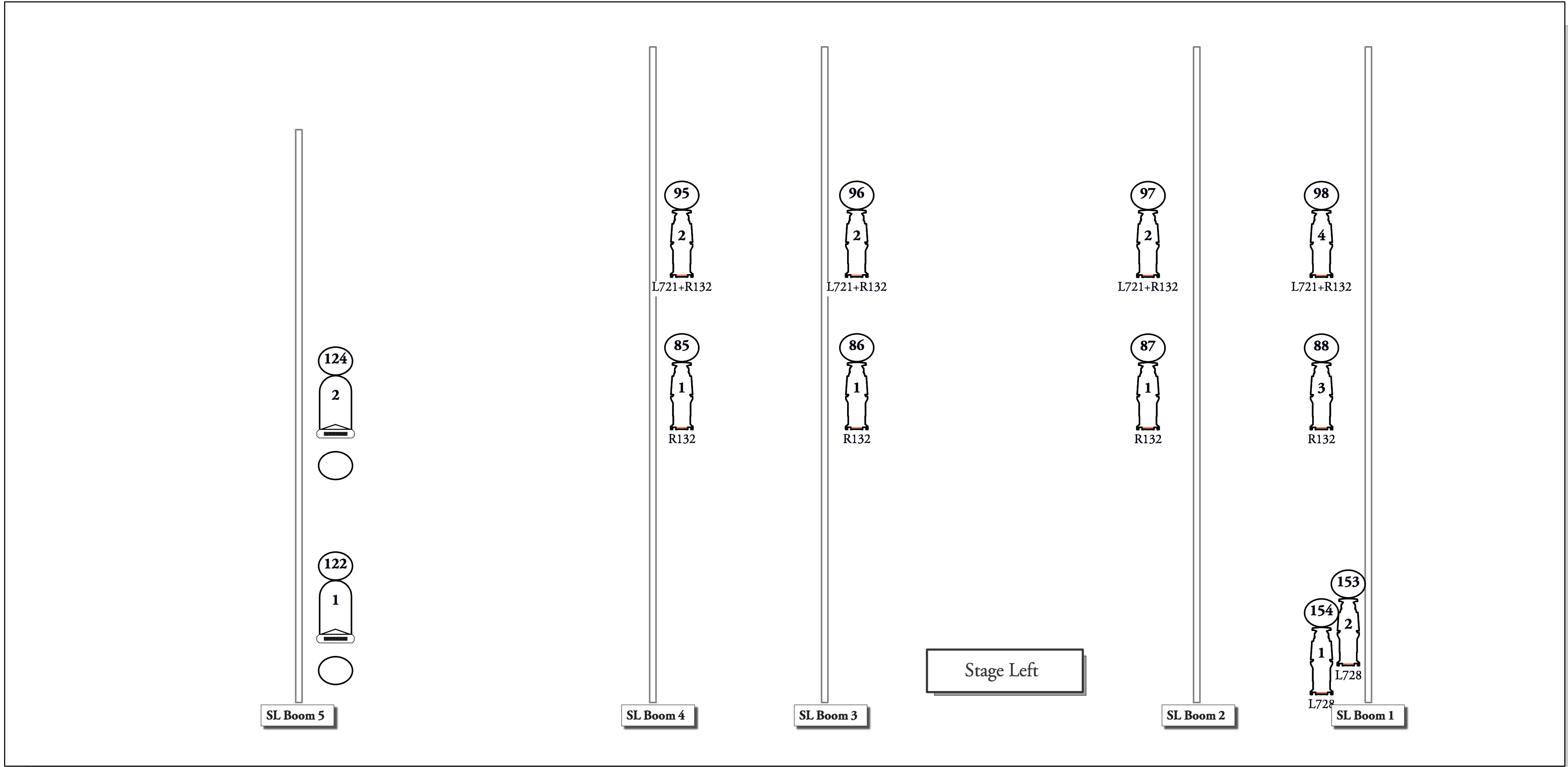
Running March 28th through April 1st

DECK LX

Date: 2/24/17 Drawn: VW 2015 SE by JJ Scale: 1/2" = 1'-0"

NOTES:

- Boom highs are unmarked. TBA upon riser config.
- Pre-focus instruments where possible.
- Drop color prior to focus.
- Keep traffic areas free of loose cable.
- Provide spare 6" cuts of R119 and R132.
- Please contact designer with all questions.



ETC Source4 26deg

ETC Source4 36deg

Altman 3in Fresnel

Altman PAR 64 WFL

Color Scroller

Color Blaze

Color Kinetics Colorblaze 72

Altman 520 Strip Cell

Color Kinetics Colorblast 12

High End Systems Sola Spot LED

Elation ZW37

Color

Unit Number

Channel

THIS DRAWING CONTAINS ONLY VISUAL CONCEPTS AND CONSTRUCTION SUGGESTIONS.

The lighting designer is solely responsible for the appearance of the production, not its safety. The designer will promptly correct any specification found to be incompatible by the Producer with proper safety precautions. The Producer will indemnify, defend, save, and hold the designer (and his or her family or heirs) harmless from and against all liability, costs, or fees, whatsoever which they may suffer by reason of the design furnished hereunder. Finally, the producer agrees to carry comprehensive general liability insurance applicable to any claims that might arise due to any work performed under this Agreement. This drawing is prepared for electricians to understand the placement of lighting fixtures only and should not be used to locate or install scenery.

Lighting Design by

Jeremy Jason

520.419.9657
Me@JJasonDesign.com

Arts Bank Mainstage
University of the Arts

601 South Broad Street
Philadelphia, PA 19107

Production Electrician
Troy Martin O'shia
(215) 485-8127
tmartinoshia@uarts.edu

Asst. Lighting Designer
Abby Schlackman
631.708.7865
ASchlackman@uarts.edu

Direction: **Becky Wright & Anisa George**
Sound Design: **Brad Pouliot**
Scenic Design: **Dalton Whiting**
Technical Direction: **Matt Groeneveld**

PLATE 3 of 5

VERSION 1

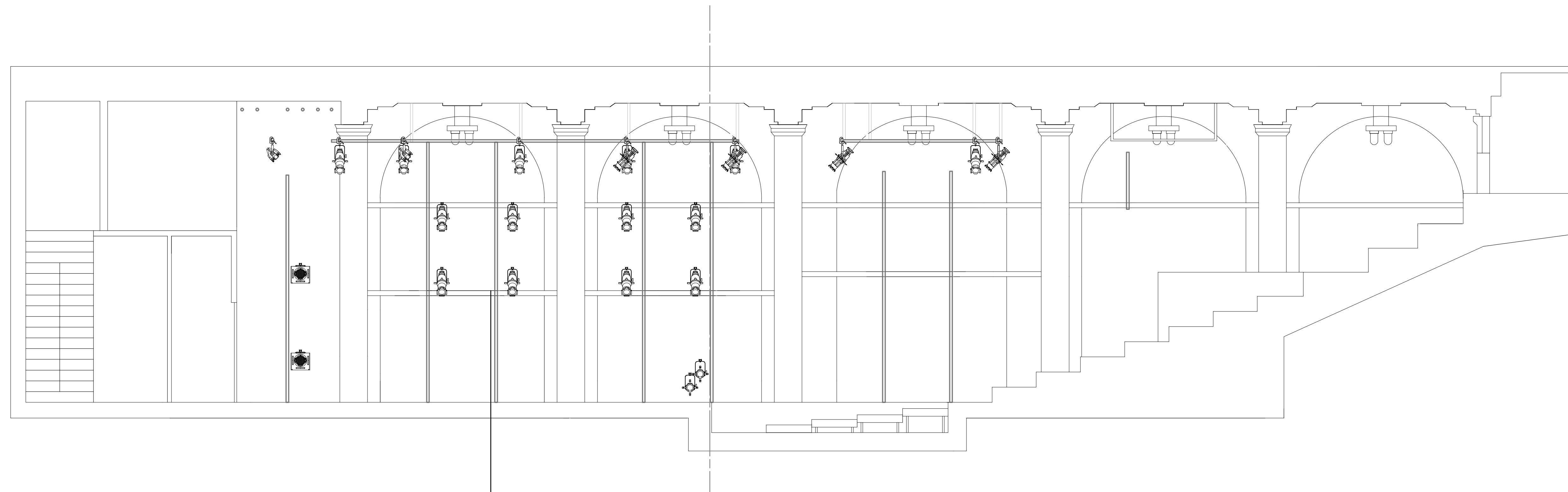
POLYPHONE

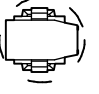


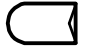

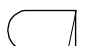


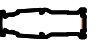



2 VENUES ~ 5 SHOWS ~ 7 DAYS

Running March 28th through April 1st

BOOMS

Date: 2/24/17 Drawn: VW 2015 SE by JJ Scale: 1/2"=1'-0"



-  High End Systems Sola Spot LED
-  PAR 16 Birdie
-  Color Kinetics Colorblaze 72
-  Altman PAR 64 WFL
-  Altman PAR 64 VNSP
-  Altman PAR 64 NSP
-  Altman 3in Fresnel
-  ETC Source4 50deg
-  ETC Source4 36deg
-  ETC Source4 26deg
-  ETC Source4 19deg
-  Altman 520 Strip Cell

THIS DRAWING CONTAINS ONLY VISUAL
CONCEPTS AND CONSTRUCTION SUGGESTIONS.


The lighting designer is solely responsible for the appearance of the production, not its safety. The designer will promptly correct any specification found to be incompatible by the Producer with proper safety precautions. The Producer will indemnify, defend, save, and hold the designer (and his or her family or heirs) harmless from and against all liability, costs, or fees, whatsoever which they may suffer by reason of the design furnished hereunder. Finally, the producer agrees to carry comprehensive general liability insurance applicable to any claims that might arise due to any work performed under this Agreement. This drawing is prepared for electricians to understand the placement of lighting fixtures only and should not be used to locate or install scenery.

Lighting Design by
Jeremy Jason
520.419.9657
Me@JJasonDesign.com

Arts Bank Mainstage University of the Arts Production Electrician Troy Martin O'shia (215) 485-8127 tmartinoshia@uarts.edu	601 South Broad Street Philadelphia, PA 19107 Asst. Lighting Designer Abby Schlackman 631.708.7865 ASchlackman@uarts.edu
--	--

Direction: **Becky Wright & Anisa George**
 Sound Design: **Brad Pouliot**
 Scenic Design: **Dalton Whiting**
 Technical Direction: **Matt Groeneveld**

PLATE 4 of 5 VERSION 1

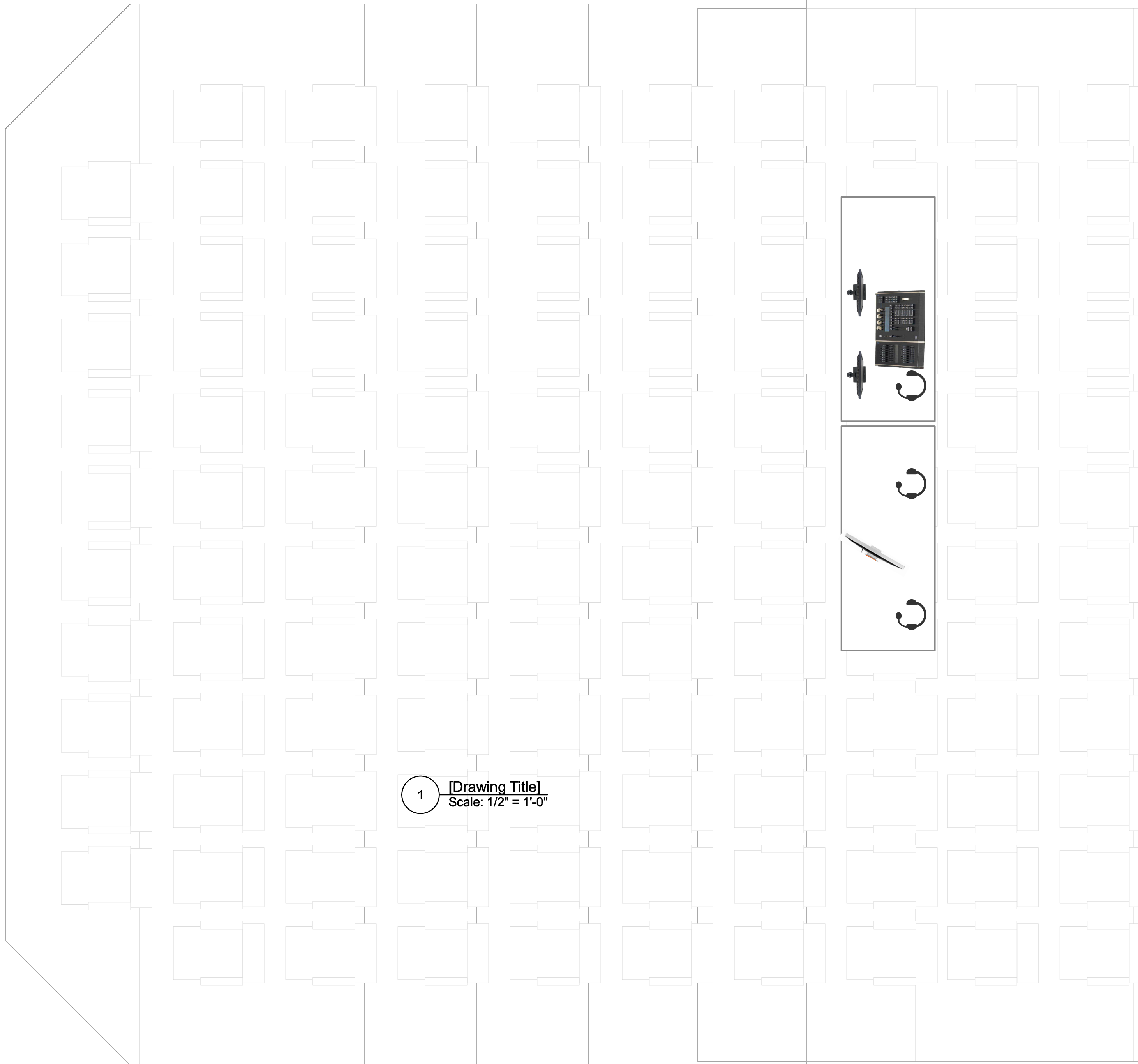


POLYPHONE
2 VENUES ~ 5 SHOWS ~ 7 DAYS

Running March 28th through April 1st

SECTION

Date: 2/24/17 Drawn: VW 2015 SE by JJ Scale: 1/2" = 1'-0"



1 [Drawing Title]
Scale: 1/2" = 1'-0"

NOTES:

- INCLUDE MINIMUM TWO SPARE EDISON OUTLETS PER TABLE.
- PROVIDE TWO LITTLE-LITES PER TABLE.
- PROVIDE GELLED CLIP LIGHTS AND COMS FOR FOLLOWSPOTS.

THIS DRAWING CONTAINS ONLY VISUAL CONCEPTS AND CONSTRUCTION SUGGESTIONS.

The lighting designer is solely responsible for the appearance of the production, not its safety. The designer will promptly correct any specification found to be incompatible by the Producer with proper safety precautions. The Producer will indemnify, defend, save, and hold the designer (and his or her family or heirs) harmless from and against all liability, costs, or fees, whatsoever which they may suffer by reason of the designs furnished hereunder. Finally, the producer agrees to carry comprehensive general liability insurance applicable to any claims that might arise due to any work performed under this Agreement. This drawing is prepared for electricians to understand the placement of lighting fixtures only and should not be used to locate or install scenery.

Lighting Design by

Jeremy Jason

520.419.9657
Me@JJJasonDesign.com

Arts Bank Mainstage
University of the Arts

601 South Broad Street
Philadelphia, PA 19107

Production Electrician
Troy Martin O'shia
(215) 485-8127
tmartinoshia@uarts.edu

Asst. Lighting Designer
Abby Schlackman
631.708.7865
ASchlackman@uarts.edu

Direction: **Becky Wright & Anisa George**
Sound Design: **Brad Pouliot**
Scenic Design: **Dalton Whiting**
Technical Direction: **Matt Groeneveld**

PLATE
5 of 5

VERSION
1



Running March 28th through April 1st

TECH TABLES

Date: 2/24/17

Drwn: VW 2015 SE by JJ

Scale: SCALE